

# *Liquidation services for non-regulated Luxembourg entities*



*In order to remain competitive, groups often decide to restructure and this may include the liquidation of some entities. We're ready to assist you throughout the process, including the provision of a liquidator mandate.*

## Your challenges

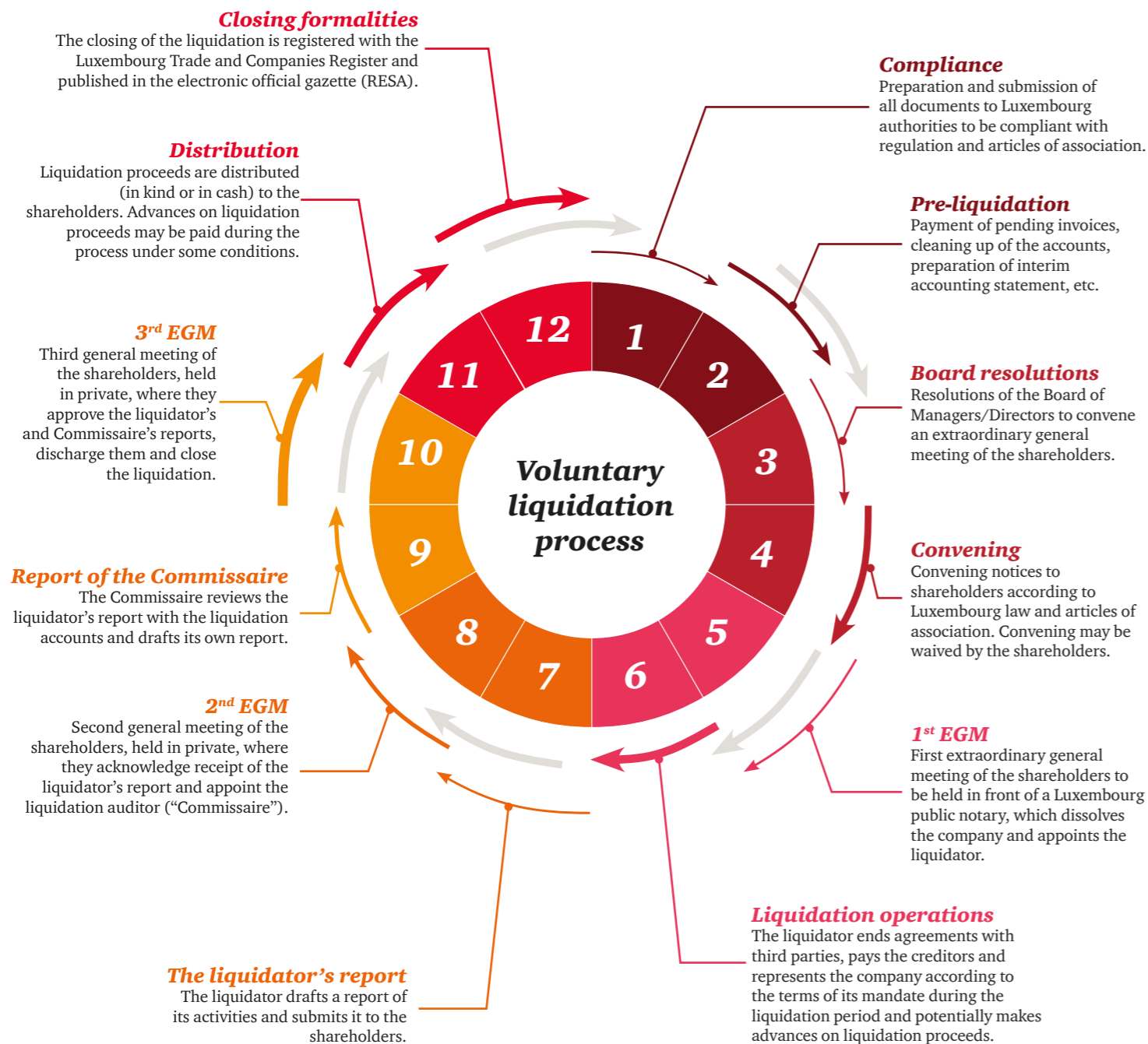
**You'd like to wind up your structure in Luxembourg because:**

- You realised your investment;
- The fund has reached maturity;
- Legislation has changed;
- There is opportunity for some economies of scale.

**You'd like to outsource the mandate of liquidator because:**

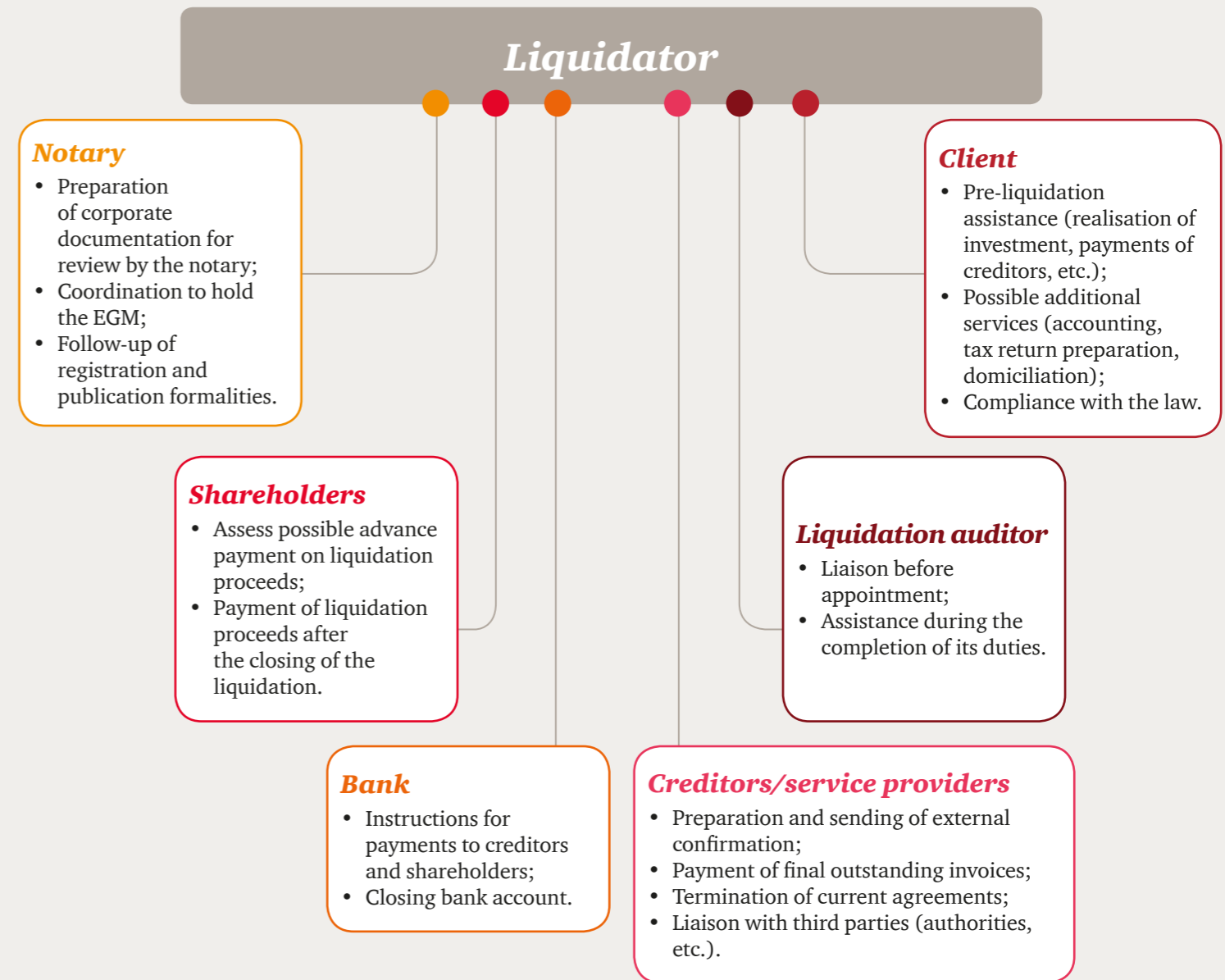
- You need an independent and experienced liquidator;
- You want to comply with regulations;
- You want a sole point of contact for all stakeholders.

## Liquidation process of a Luxembourg company



## How we can help

- We assist you in the pre-liquidation process;
- We coordinate with various stakeholders;
- We are an independent and reliable liquidator;
- We offer an efficient and experienced team.



## Some of our referrals

- Liquidation of an SPV further to the sale of its participation;
- Liquidation of an SPV further to the acquisition of a group of companies;
- Liquidation of a fund, further to the realisation of its investment.

## Our Team



### **Anne-Sophie Preud'Homme**

Partner  
+352 49 48 48 2126  
anne.sophie.preudhomme@lu.pwc.com



### **Jean-Yves Lhommel**

Partner  
+352 49 48 48 3012  
jean-yves.lhommel@lu.pwc.com



### **François Guyot**

Director  
+352 49 48 48 3162  
francois.guyot@lu.pwc.com

## **www.pwc.lu**

PwC Luxembourg (www.pwc.lu) is the largest professional services firm in Luxembourg with 2,600 people employed from 58 different countries. PwC Luxembourg provides audit, tax and advisory services including management consulting, transaction, financing and regulatory advice. The firm provides advice to a wide variety of clients from local and middle market entrepreneurs to large multinational companies operating from Luxembourg and the Greater Region. The firm helps its clients create the value they are looking for by contributing to the smooth operation of the capital markets and providing advice through an industry-focused approach.

The PwC global network is the largest provider of professional services in the audit, tax and management consultancy sectors. We are a network of independent firms based in 157 countries and employing over 208,000 people. Talk to us about your concerns and find out more by visiting us at [www.pwc.com](http://www.pwc.com) and [www.pwc.lu](http://www.pwc.lu).

© 2016 PricewaterhouseCoopers, Société coopérative. All rights reserved.

In this document, "PwC" or «PwC Luxembourg» refers to PricewaterhouseCoopers, Société coopérative which is a member firm of PricewaterhouseCoopers International Limited, each member firm of which is a separate legal entity. PwC IL cannot be held liable in any way for the acts or omissions of its member firms.

